

RING MAIN UNIT

- RATINGS UP TO 12KV, 630A, STC 21KA (3 SEC), BIL 28/75 KV, 50 HZ
- METAL-ENCLOSED SWITCHGEAR, TYPE-TESTED, ACCORDING TO IEC 62271-200
- INTERNAL ARC CLASSIFICATION 21 KA FOR 1 SEC AFLR



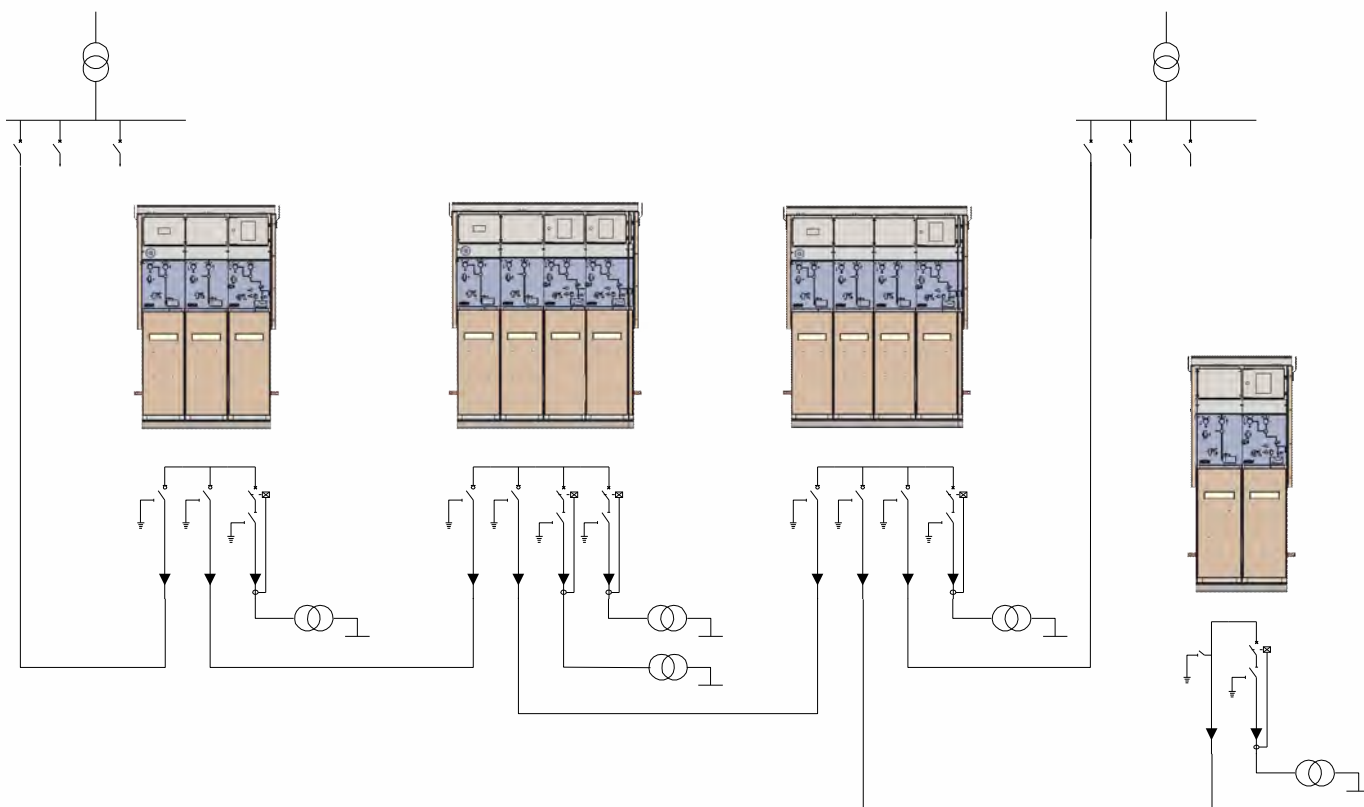
We are committed to provide range of products complying with the electrical power industry standards and that exceeds customer expectation

APPLICATIONS

- Commercial Buildings
- Infrastructure
- Industries
- Energy
- Hospitals/Hotels/
Offices
- Data Centers
- Shopping Complexes
- Airports / Ports
- Underground Railway
Stations
- Water Treatment
Plants,
- Mining, Automotive
- Iron & Steel
- Wind Power/ Solar
Power
- Compact Substations



RING MAIN UNIT NETWORK



RING MAIN UNIT IN NETWORK

12kV AIS VCB PANEL

- Compact and robust
- Draw-out VCB with Compartmentalized design
- Seamless Integration with SCADA Network for Remote Operation and Control
- Encapsulated Pole Design
- Arc Venting outside room

RING MAIN UNIT

TECHNICAL SPECIFICATIONS

Rated Voltage	12 kV
Rated Frequency	50 Hz
Rated Main Bus Bar Current	630 A
Rated Feeder Current	630 A
Rated Insulation Level	28/75 kV
VCB, LBS and ES Rated Short Time Current (3 sec)	21 kA
Rated Active Load Breaking Current to the LBS	630 A
Internal Arc Qualification	21 kA for 1 sec AFLR
Class :	
Circuit breaker	E2, M2, C2, S2
Load break switch	E2, M1, C2
Earthing switch	E1, M0

VACUUM CIRCUIT BREAKER

Rated Voltage	12 kV
Rated Frequency	50 Hz
Rated Current	630 A
Rated Insulation Level	28/75 kV
Rated Short Time Current (3 sec)	21 kA
Rated Short Circuit Making Current	52.5 kA
Rated Operating Sequence	0-0.3s-CO-3 min-CO
Class (as per IEC 62271-100)	E2, M2, C2, S2

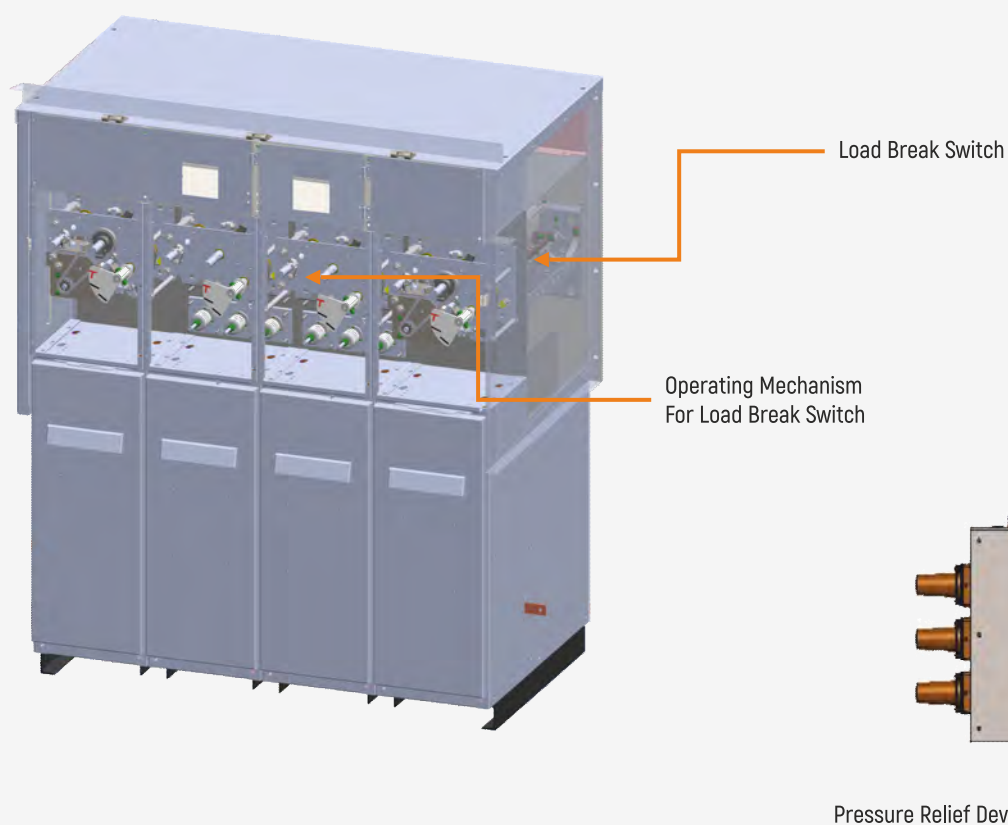
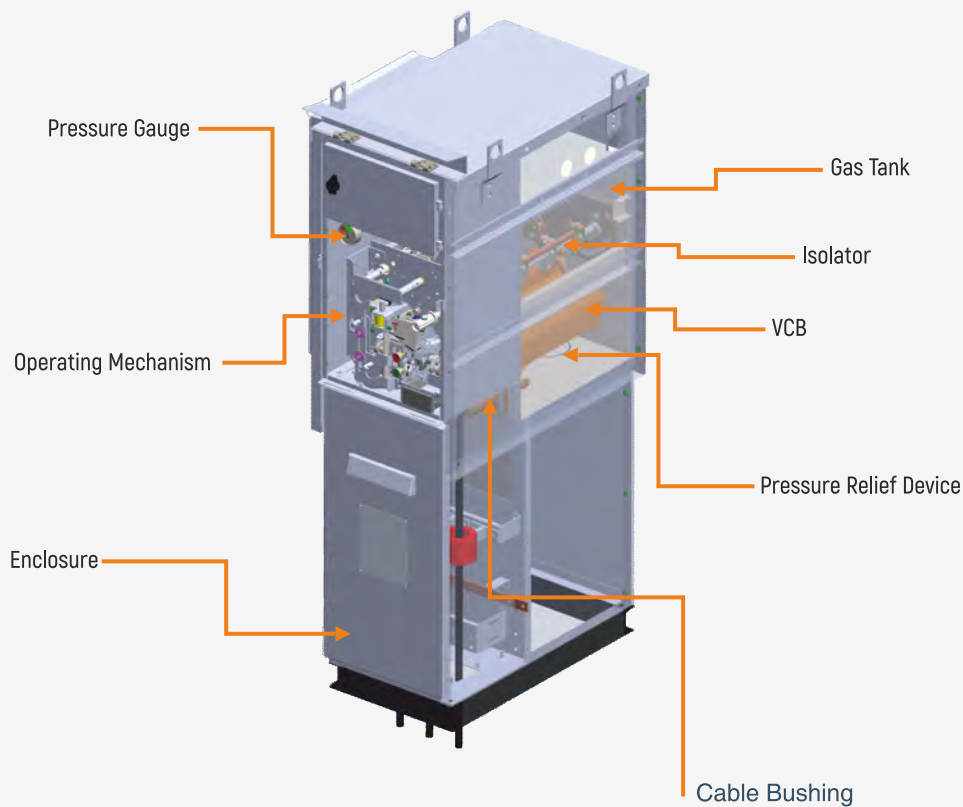
LOAD BREAK SWITCH

Rated Voltage	12 kV
Rated Frequency	50 Hz
Rated Current	630 A
Rated Insulation Level	28/75 kV
Rated Short Time Current (3 sec)	21 kA
Rated Short Circuit Making Current	52.5 kA
Rated Operating Sequence	0-0.3s-CO-3 min-CO
Class (as per IEC 62271-100)	E2, M1, C2

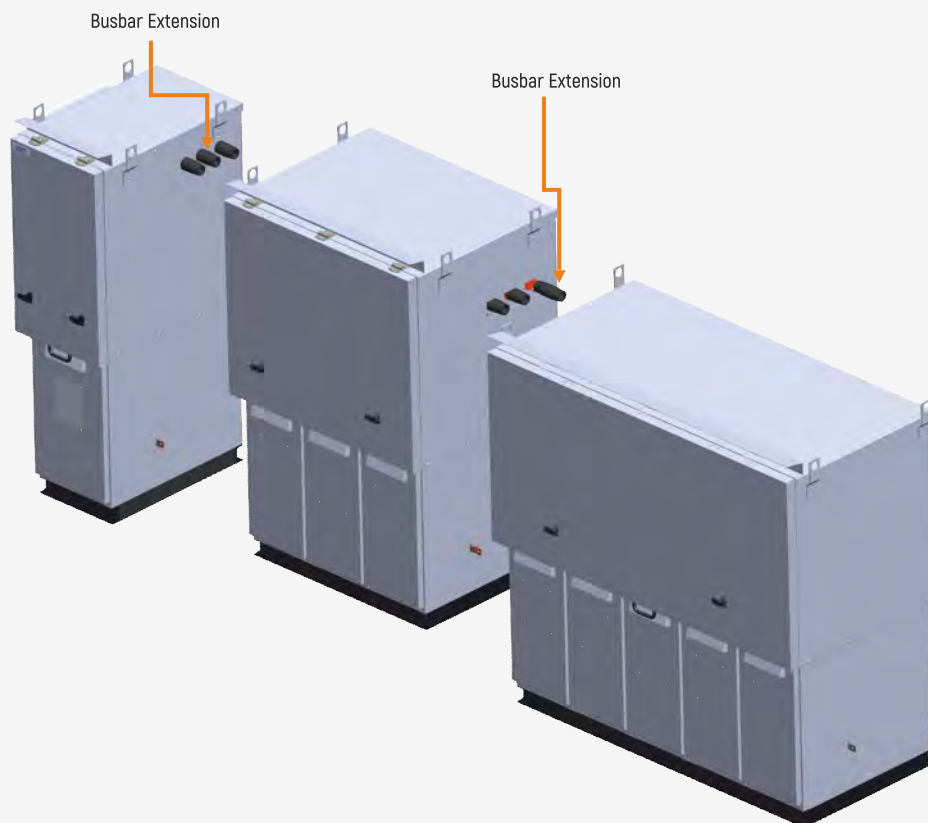
LOAD BREAK SWITCH

Rated Short Time Current (3 sec)	21kA
Class (as per IEC 62271-102)	E1, M0

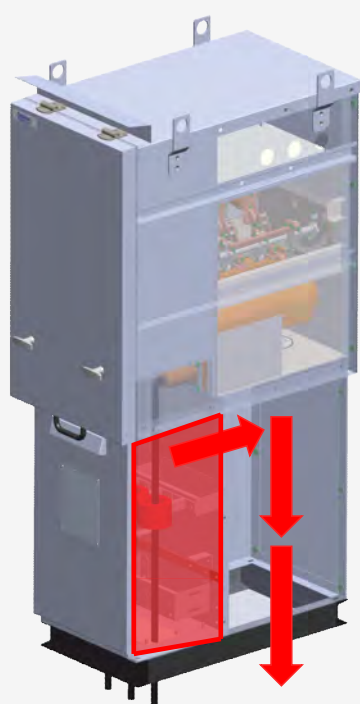
CONSTRUCTION



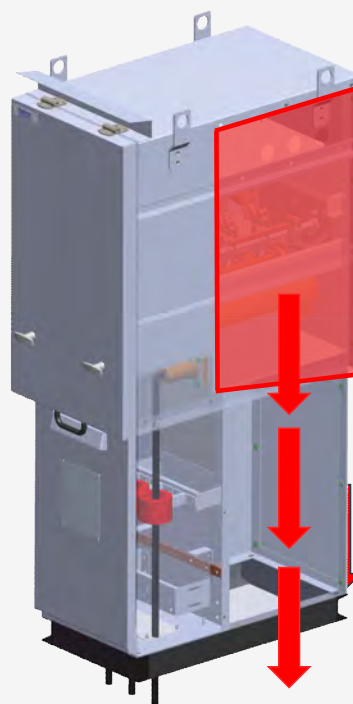
SWITCHGEAR



ARC VENTING



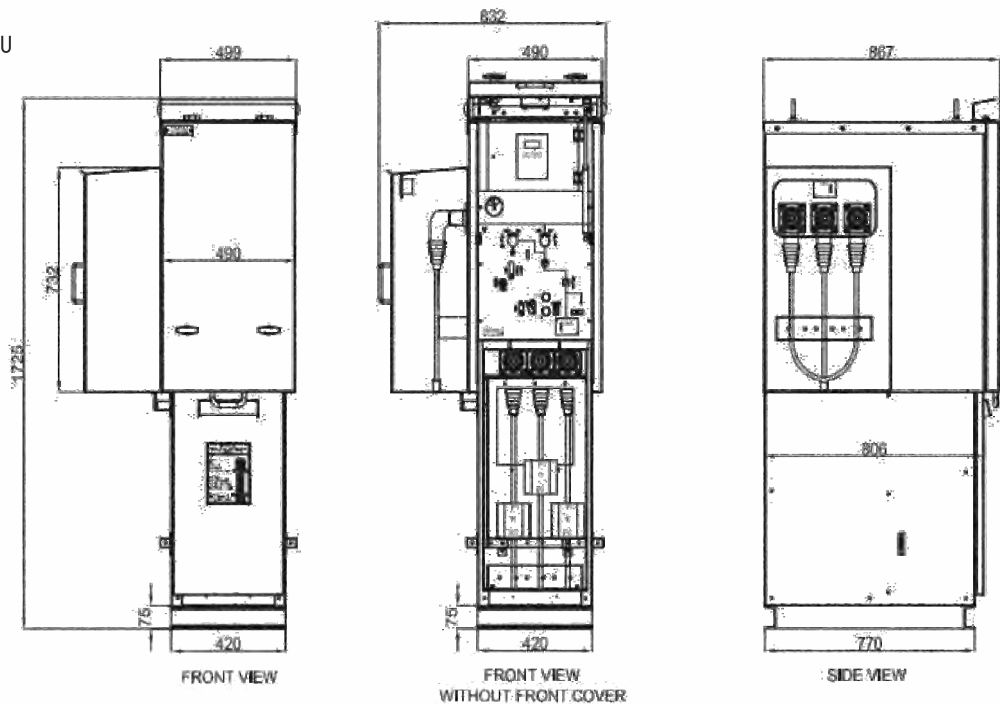
Internal Arc in Cable Chamber



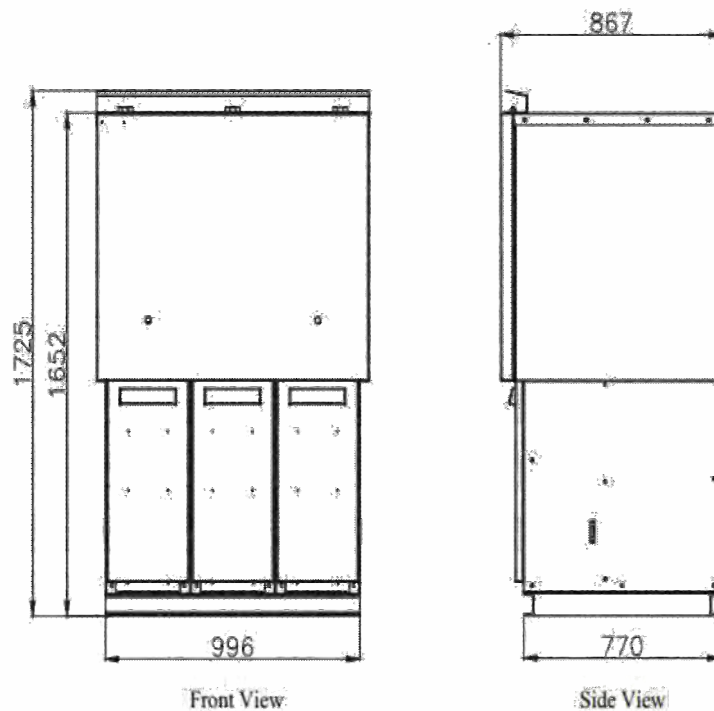
Internal Arc in Gas Tank

GA DRAWING

1 Way-V RMU



3 Way-LVL RMU



Lubi Electronics

Sardar Patel Ring Road, Nr. Karai Gam Patia, Nana Chiloda, Dist. : Gandhinagar - 382 330.

Tel. : +91-79-6674 5300 • Fax : +91-79-6674 5599

E-mail : info@lubielelectronics.com • Website : www.lubielelectronics.com

stelmec®
beyond boundaries