



GEAR MOTOR



- Medium Gear Motor
- Micro Gear Motor
- R-F-K-S Series Gear Motor
- Planetary Gearbox for Servo

MEDIUM GEAR MOTOR

Product Advantage

■ High durability

The gear is made of high-strength alloy steel and the shell is made of high-strength die-cast aluminum alloy, which is light and durable.

■ High efficiency

Better efficient transmission than conventional bevel gears and worm gear reducers at the same speed ratio condition.

■ High input speed

Maximum input speed up to 10000rpm.

■ Low noise

Compact design, precision manufacturing, noise below 65dB(A).

■ Maintenance free

The whole machine is compact, the gear motor is lubricated with grease, and life-long maintenance free.





GV Vertical Gear Motor



GH Horizontal Gear Motor



GV Vertical High-speed Ratio
Gear Motor



GH Horizontal High-speed
Gear Motor



GV Vertical Shrinkable
Gear Motor



GH Horizontal Shrinkable
Gear Motor



GV Vertical High-speed Ratio
Shrinkable Gear Motor



GH Horizontal High-speed
Shrinkable Gear Motor



GVM Vertical Straight
Gear Motor



GHM Horizontal Straight
Gear Motor



Special Gear Motor for
Horizontal Movement of Garage



Special Gear Motor for
Vertical Movement of Garage



GVD Vertical Dual
Axle Gear Motor



GHD Horizontal Dual
Axle Gear Motor



Vertical Three-phase Standard
IEC aluminum Gear Motor

PARAMETERS

- Power:100W-7500W
- Ratio:3、 5、 10……1800ratio
- Single phase: 110V,220V/50,60hz-1phase
- Three-phase:220V,380V/50,60hz-3phase
- Brake available: Brake unit, with release brake unit
- DC24V brake
- Output shaft size:18、 22、 28、 32、 40、 45、 50、 60
(Size can be customized)

PERFORMANCE

- No-load motor for 1h,temperature $\leq 55^{\circ}\text{C}$,load for 1h,temperature $\leq 68^{\circ}\text{C}$

APPLICATION

- | | |
|--|--|
| <ul style="list-style-type: none"> ▪ Conveyor ▪ Ceramic Industry ▪ Hopper equipment ▪ Lifting equipment ▪ Machine Tools | <ul style="list-style-type: none"> ▪ Hoisting equipment ▪ Parking equipment ▪ Assembly line equipment ▪ Animal husbandry machine ▪ Plastic, Packaging & Food Processing |
|--|--|

MICRO GEAR MOTOR

Product advantage

■ high stability

Load power is sufficient, stable operation, and low fatigue after long term use.

■ High security

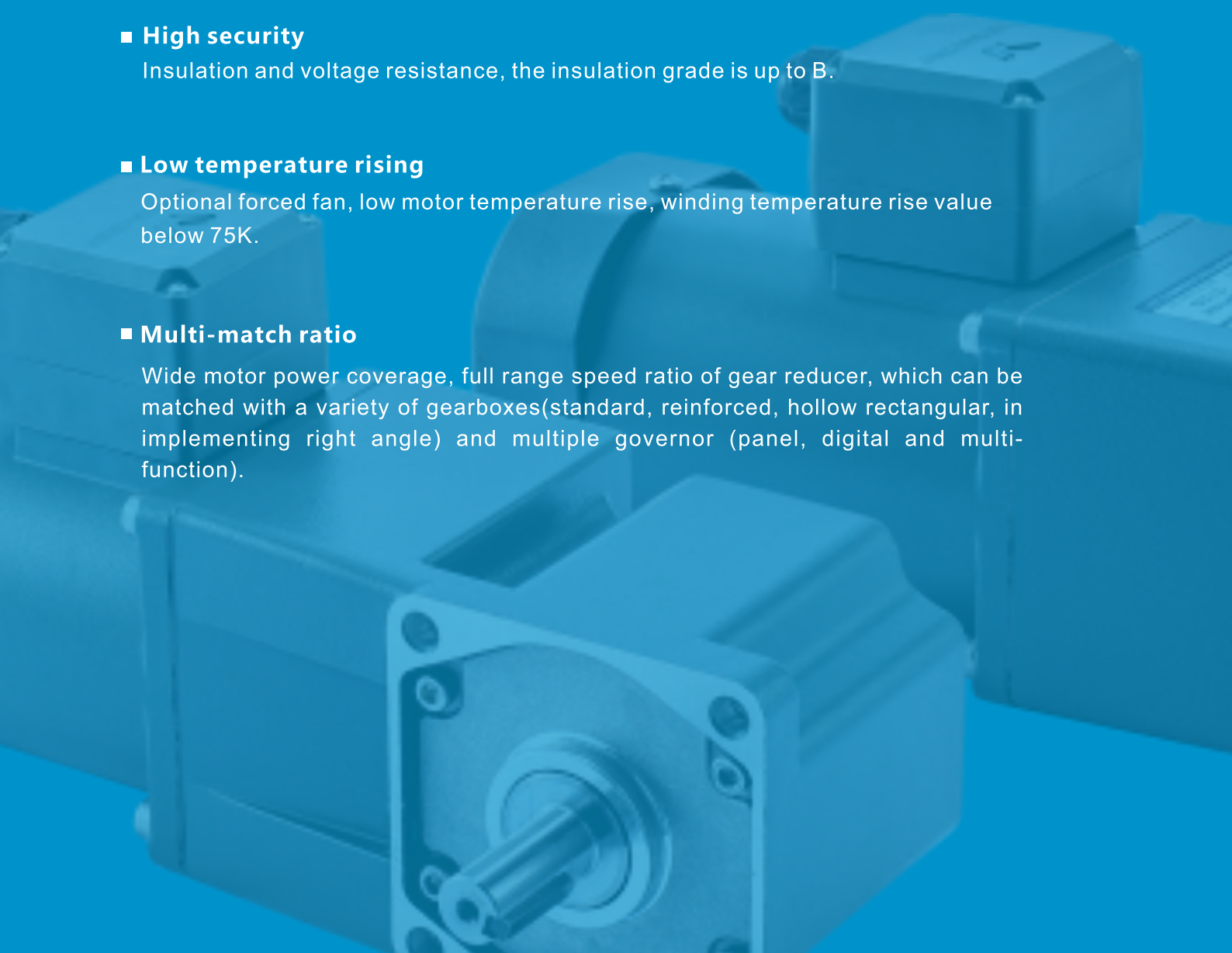
Insulation and voltage resistance, the insulation grade is up to B.

■ Low temperature rising

Optional forced fan, low motor temperature rise, winding temperature rise value below 75K.

■ Multi-match ratio

Wide motor power coverage, full range speed ratio of gear reducer, which can be matched with a variety of gearboxes (standard, reinforced, hollow rectangular, in implementing right angle) and multiple governor (panel, digital and multi-function).

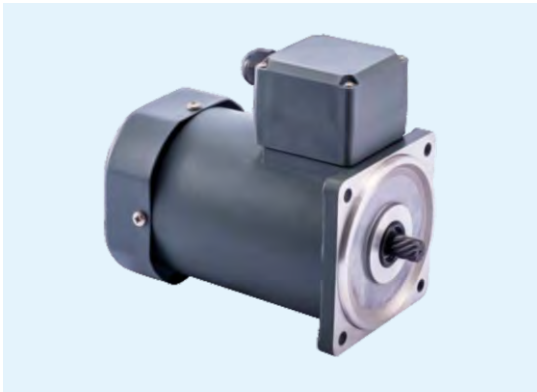




Standard Motor + Eared Gear Box



Standard Motor + Standard Gear Box



Standard Motor(Gear Shaft)



Standard Motor(Round Shaft)



Right Angle Hollow Gear Box



Right Angle Solid Gear Box



Standard Gear Box



Eared Gear Box

Gear box with frame size: 60-100, Item No.: H/HE/RT/RC



H type



HE type



RC type



RT type

PARAMETERS

- Power: 6W-200W
- Single phase: 110V, 220V/50, 60HZ
- Three-phase: 220V, 380V/50, 60HZ
- Brake available: 0.5N·M/2.5N·M magnetic brake
- Adjustable speed: range from 90~1480rpm/min

PERFORMANCE

- No-load motor for 1h, temperature $\leq 55^{\circ}\text{C}$, load for 1h, temperature $\leq 70^{\circ}\text{C}$

APPLICATION

- | | |
|---|--|
| <ul style="list-style-type: none"> ▪ Conveyor ▪ Ceramic equipment ▪ Hopper equipment ▪ Lifting equipment ▪ Machine Tools | <ul style="list-style-type: none"> ▪ Hoisting equipment ▪ Parking equipment ▪ Assembly line equipment ▪ Animal husbandry machine ▪ Plastic, Packaging & Food Processing |
|---|--|

R.F.K.S GEAR MOTOR

Product advantage

■ High stability

The structure of the gear motor is designed with cylindrical gears and helical gears. It has a compact structure ,wide output torque coverage and long product life.

■ High bearing capacity

The shape and direction of the gear can be optimized to greatly reduce noise and improve load carrying capacity .The heavy-duty gear is also rounded to the root to further optimize the load-carrying capacity and mechanical properties.

■ Low temperature rising

Streamlined design and internal noise reduction design for the shape of the cabinet for easy fan cooling.

■ Low noise

High modularity, smooth operation, low noise.



R Series - Helical Gear Motor



F Series - Helical Gear Motor



K Series - Bevel Gear Motor



S Series - Worm Gear Motor

PARAMETERS

- Product series: R、F、K、S
- Power: 0.12KW-11KW
- Ratio: 3.37-12912
- Frame size: 37-170

APPLICATION

This product is widely used in electric power, coal, cement, metallurgy, port, environmental protection, chemical, light industry, plastics, petroleum, shipbuilding and other industries.

PLANETARY GEARBOX

Product advantage

- **High stability**

The gear are made of high-strength alloy steel, tthe entire gear is hardened to ensure life time and original precision after long time use.

- **High efficiency**

Transmission efficiency up to 97% or more.

- **High input speed**

Maximum input speed up to 10000rpm.

- **High speed ratio**

Modular design, planetary gearboxes can be connected to each other with a high-speed ratio.

- **Low noise**

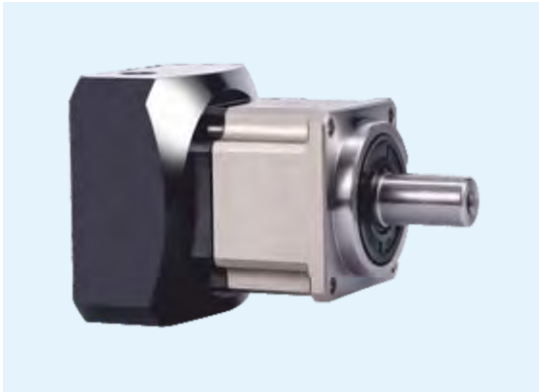
Compact design, precision manufacturing, noise below 63dB(A).

- **Low backlash**

Single section below 3 arcmin, double section below 8 arcmin.

- **Maintenance free**

With compact and full sealed structure to ensure no grease leakage.



WAB



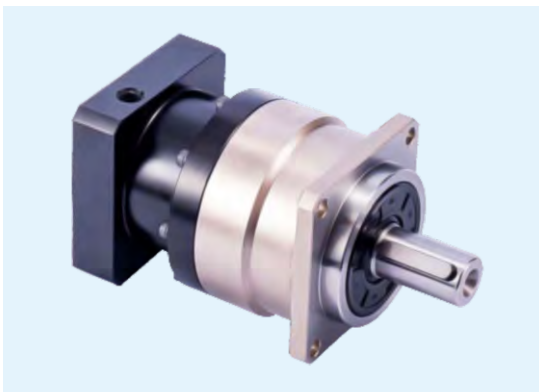
WABR



WAD



WADR



WVRB



WVRBR



WAE



WAER



WPF



WPFR



WPL



WPLR



WRD



WRS



WRH

SPECIFICATION AND PARAMETERS

- Output shaft size:12~50mm
- (Shaft size can be customized)
- Reduction range:3、 4、 5、 7、 10.....100 ratio
- Maximum radial force:355~6300N
- Maximum axial force:275~8400N

Full load capacity	97	L1:1 stage		Precision backlash	Reduced backlash	Standard backlash	Economic backlash
	94	L2:2 stage		P0	P1	P2	P3
Backlash	WAB	arc min	L1	–	≤3	≤5	≤8
			L2	–	≤5	≤8	≤12
	WAD		L1	≤1	≤3	≤5	–
			L2	≤3	≤5	≤8	–

APPLICATION

- Packaging machine
- Semi-conduct production equipment
- Medical machine
- Printing machine
- Robot arm
- Factory automation equipment
- Tire building machine
- Jewellery machine

HOLLOW ROTATING PLATFORM

Product advantage

- **High stability**

The gear are made of high-strength alloy steel, the entire gear is hardened to ensure life time and original precision after long time use.

- **High efficiency**

Transmission efficiency up to 97% or more.

- **High input speed**

Maximum input speed up to 10000rpm.

- **Low noise**

Compact design, precision manufacturing, noise below 63dB(A).

- **Low backlash**

Adjustable (no backlash), the value of run-out is small.

- **Maintenance free**

With compact and full sealed structure to ensure no grease leakage.



APPLICATION

- The product are widely used in robot arm, optical applications and those with high precision positioning or high precision equipment requirement.



Lubi Electronics

Sardar Patel Ring Road, Nr. Karai Gam Patia, Nana Chiloda, Dist : Gandhinagar - 382 330.

Tel. : +91-79-6674 5300 • Fax : +91-79-6674 5599

E-mail : info@lubielectronics.com • Website : www.lubielectronics.com, www.lubisolar.com

BRANCH OFFICE

VAPI

104-A, Platinum Mall, Plot No. Cm/13, Opp. V.I.A. Ground,
G.I.D.C. Vapi - 396 195. District : Valsad, Gujarat. INDIA
Tel. : + 91 - 260 - 2425 307

MUMBAI

405, Sangeet Plaza, Opp. Marol Fire Brigade, Marol Maroshi Road,
Andheri (E), MUMBAI - 400 059.
Tel. : + 91 - 22 - 6704 2570 / 2925 7315

PUNE

Breman Business Center, Off. No.301, Nr. City International School,
Opp. Breman Square, University Road, Aundh Pune - 411 007.
Tel. : + 91 - 20 - 2588 0583

DELHI

202, 2th Floor, Ajit Singh House, 12, Commercial Complex,
Yusuf Sarai, New Delhi. 110 049.
Tel. : + 91-11-4608 5120

LUDHIANA

BXX1/14436, Nr. Dada Motors, Besides HDFC Bank,
Kalsinagar, G.T.Road, Ludhiana - 141 003.
Tel. : + 91 - 161 - 2535 342

BANGALORE

"Sri Chakra" #30/25/1, 1st Floor, New Ring Road,
Malagala, 2nd Stage, Nagarabavi, Bangalore-560072, Karnataka.
Tel. : + 91 - 078150 18411

CHENNAI

#3, 1st Floor, Vishalakshi Street, Balavinayagar Nagar,
Arumbakkam, Chennai - 600 106.
Tel. : + 91 - 44 - 6459 8855 • Fax : + 91 - 44 - 4355 6630

COIMBATORE

SF 489/2 Thiru Nagar 3rd Street,
Selvapuram By-Pass Road, Coimbatore - 641026.
Tel. : + 91-422-6555 886 • Service No. : +91 - 422 - 2340 111

HYDERABAD

Shed No. - 21, Phase - 1, TCIE, Balanagar,
Hyderabad - 500 037.
Tel. : + 91 - 40 - 4007 3424

KOLKATA

41/30 Dumdum Road, Ghosto Bihari Colony, Nr. Lord,s Goli,
Beside ST. Mary's School. KOLKATA - 700074
Tel. : + 91 - 90819 03883